

# Whakatutuki

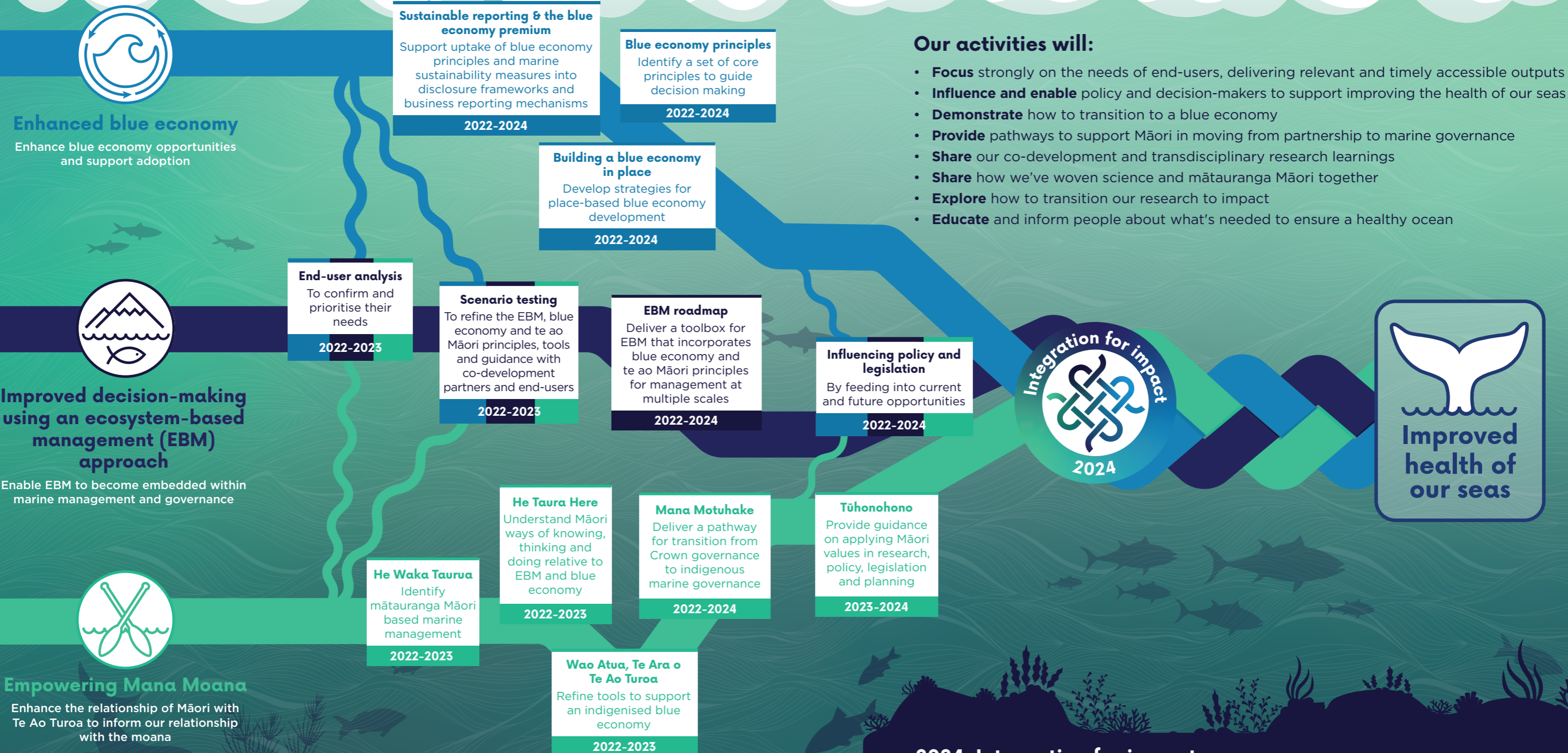
## Bringing together our research

National  
**Science**  
Challenges

SUSTAINABLE  
SEAS

Ko ngā moana  
whakauka

We are weaving together the findings from 75 research projects carried out 2014–2023, to ensure the overall result of Sustainable Seas is greater than the sum of its parts. Three interconnected workstreams will contribute directly toward long-term outcomes that are critical to improving the health of our seas.



### Our activities will:

- **Focus** strongly on the needs of end-users, delivering relevant and timely accessible outputs
- **Influence and enable** policy and decision-makers to support improving the health of our seas
- **Demonstrate** how to transition to a blue economy
- **Provide** pathways to support Māori in moving from partnership to marine governance
- **Share** our co-development and transdisciplinary research learnings
- **Share** how we've woven science and mātauranga Māori together
- **Explore** how to transition our research to impact
- **Educate** and inform people about what's needed to ensure a healthy ocean

### 2024 Integration for impact

Sharing and embedding the learnings, highlights, key messages, and vision for the future developed over the life of Sustainable Seas to:

- Create momentum and pathways for long-term change
- Provide ongoing accessibility to data, information, tools, and knowledge
- Support capability development of researchers, co-development partners, and end users
- Profile exemplars of practice in EBM, blue economy and te ao Māori approaches