

SUSTAINABLE
SEAS

Ko ngā moana
whakauka

Linking biodiversity and marine ecosystem values using ecosystem services

Vera Rullens



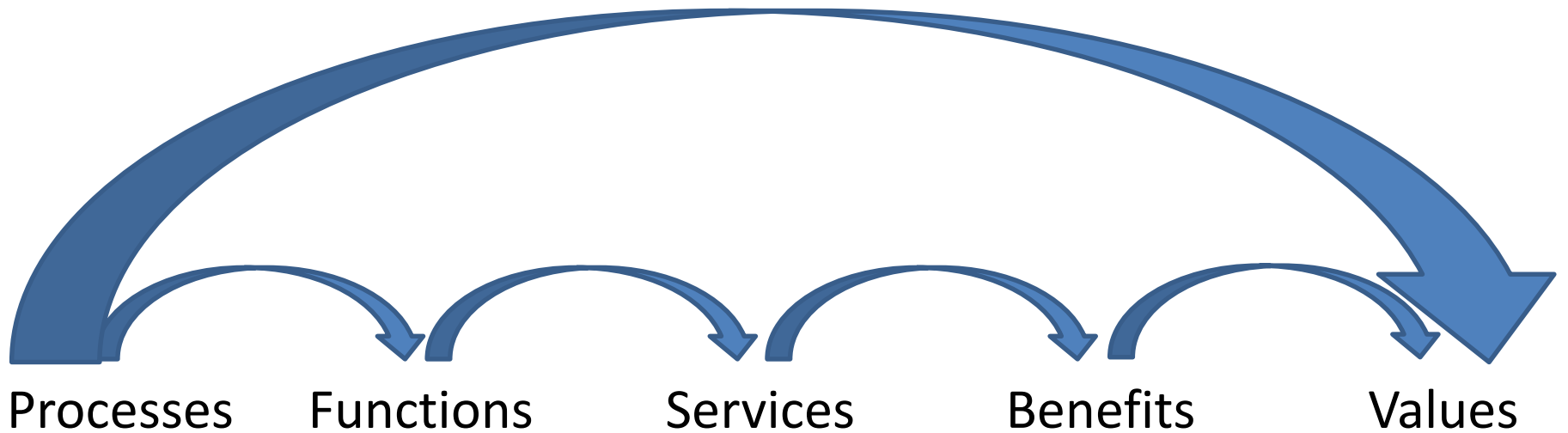
Ecosystem Services



What
biodiversity
“does”

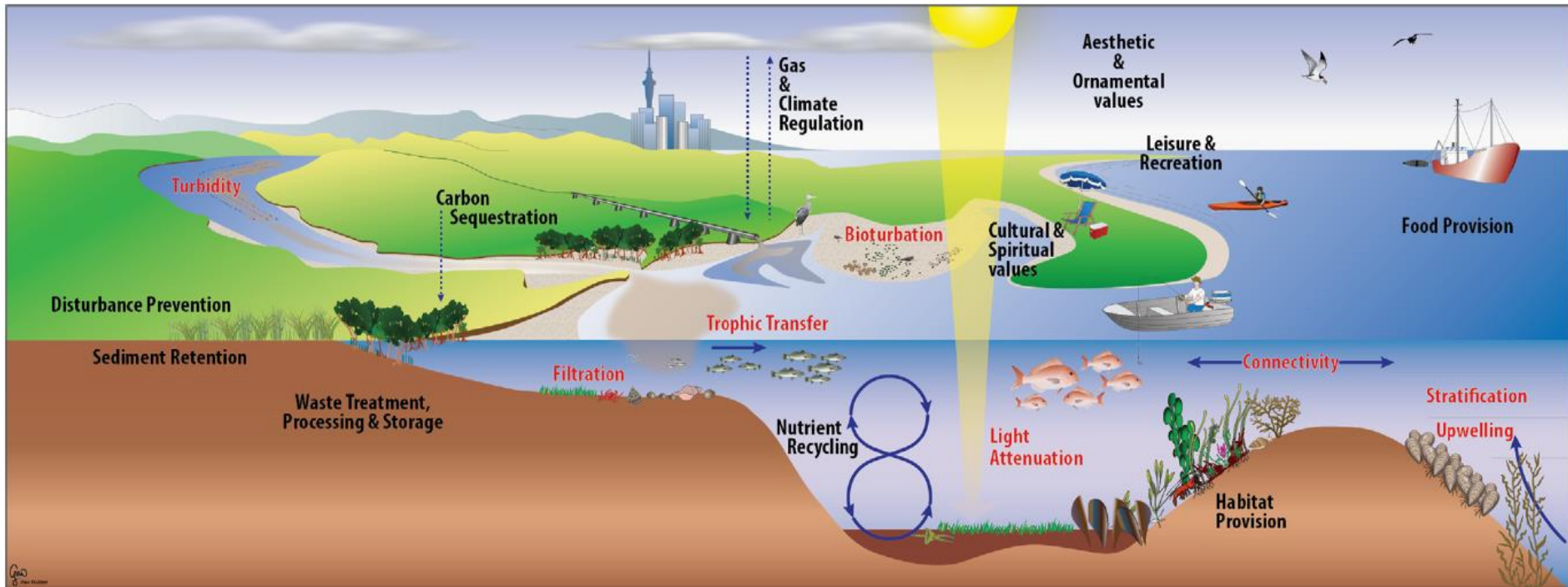
What people
“care about”

Ecosystem Services

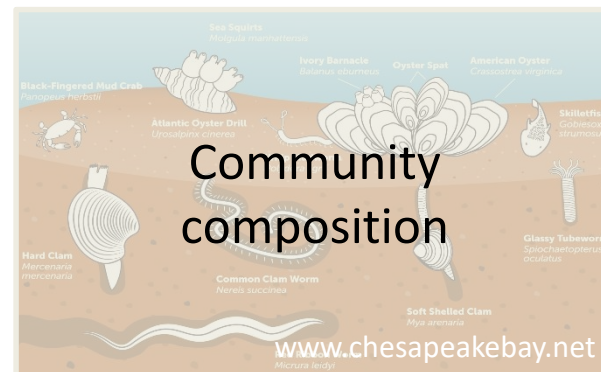
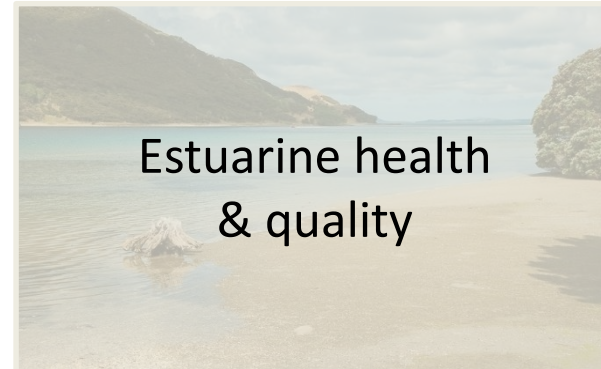


What
biodiversity
“does”

What people
“care about”



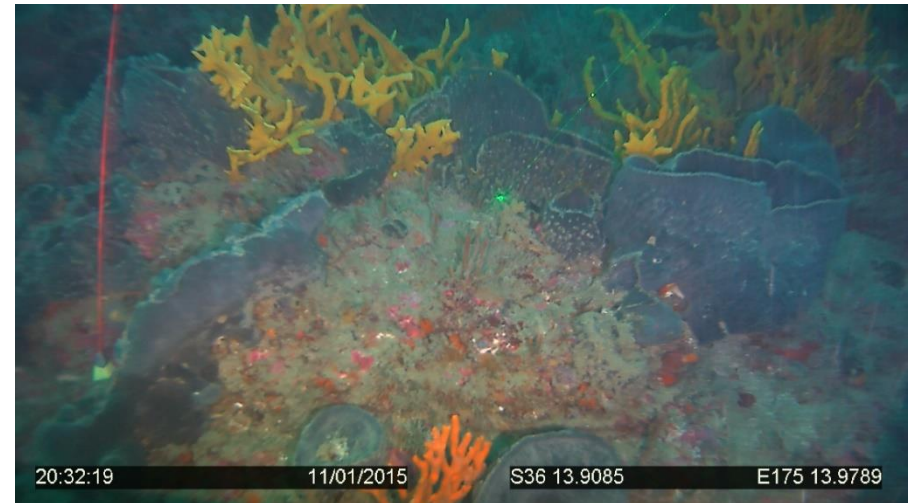
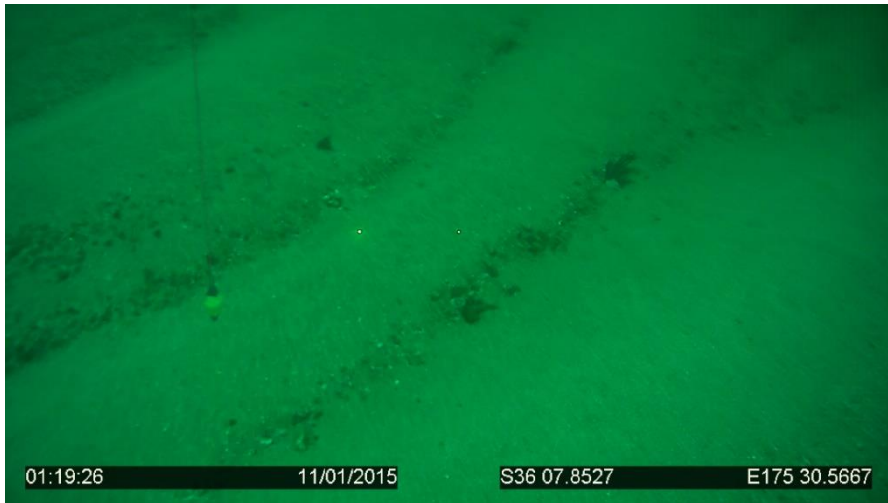
Bundles of ecosystem services



Mapping ecosystem services

ES that resonated with NZers who were surveyed (c.f. Kate Davies)

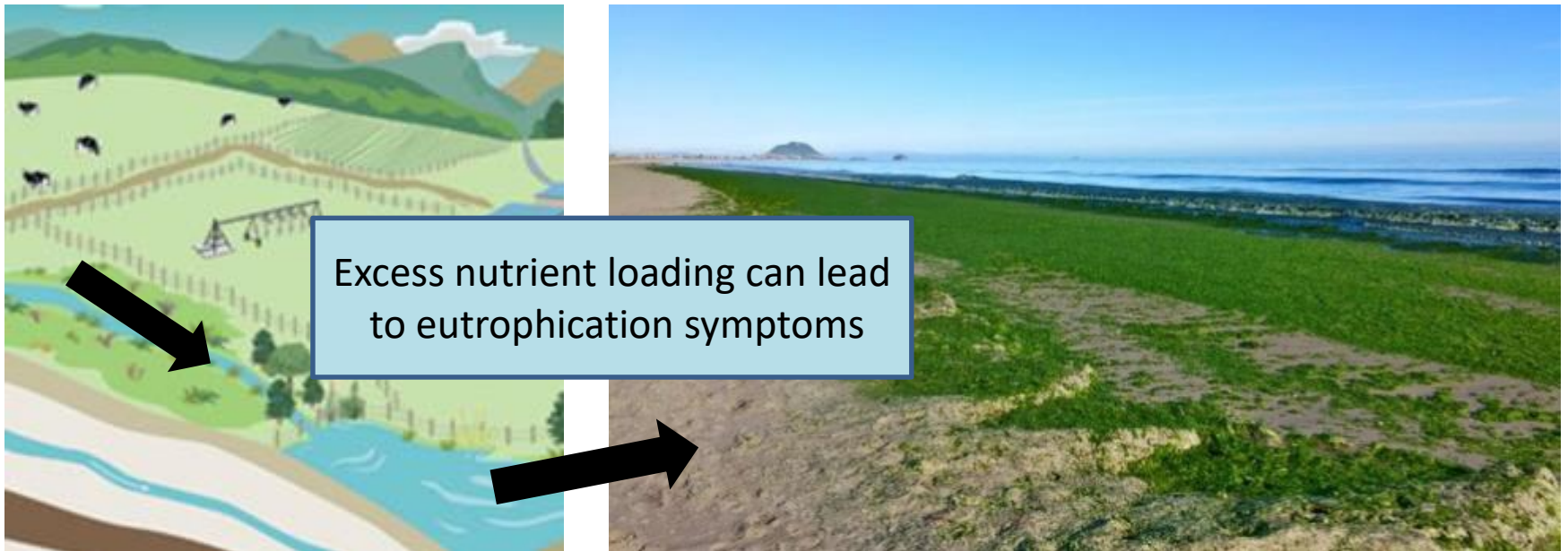
1. Refuge/nursery habitat for juvenile fish and invertebrates
(Drew Lohrer, Understanding degradation and recovery (Part 2))



Mapping ecosystem services

ES that resonated with NZers who were surveyed (c.f. Kate Davies)

2. Removal of pollutants (particularly nutrients, e.g. nitrogen)
(Emily Douglas, Addressing risk & uncertainty)



SUSTAINABLE
SEAS

Ko ngā moana
whakauka

Thank you

